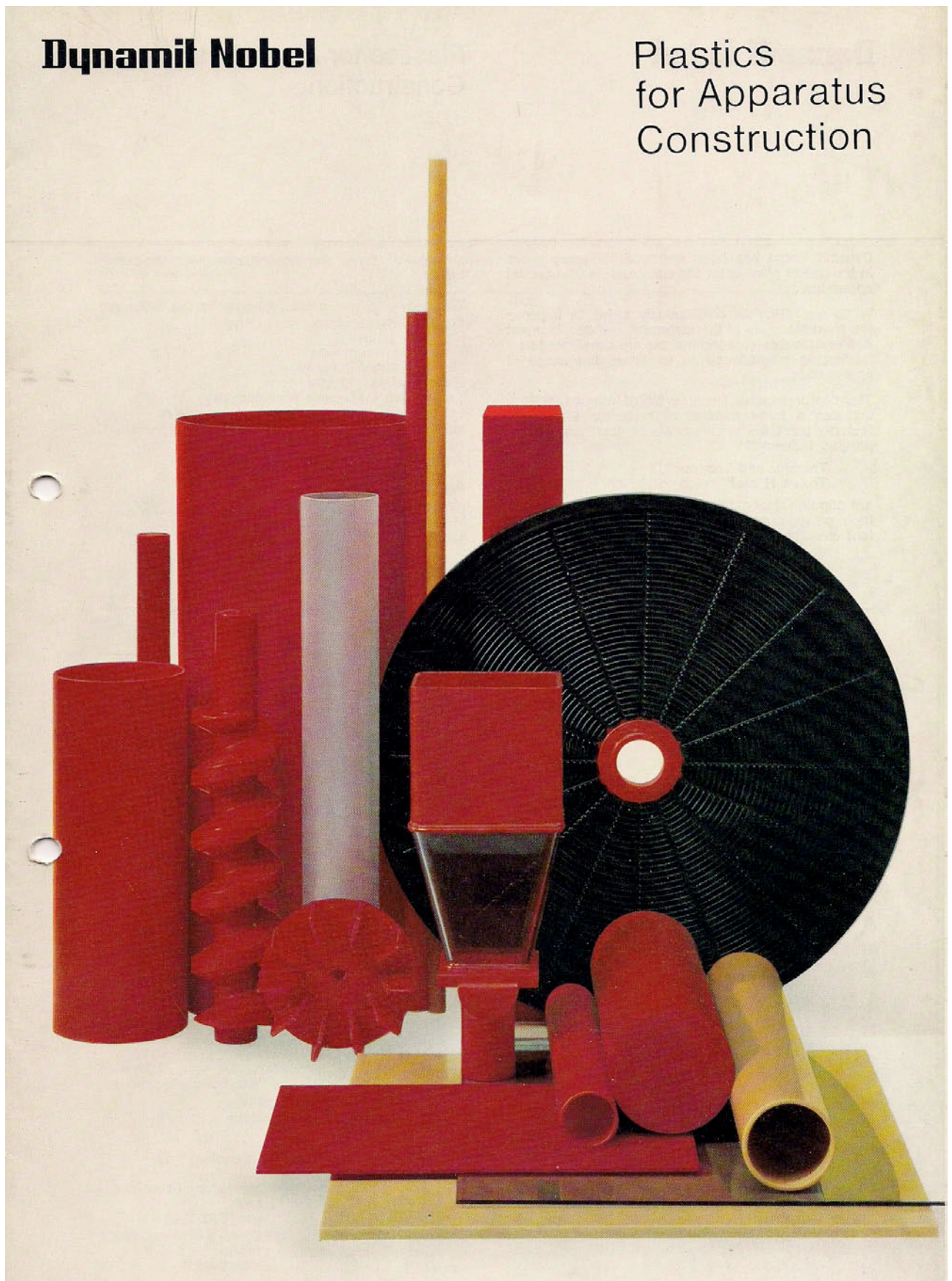


TROVIDUR, Plastics for Apparatus Construction
Firmenschrift von 1967

Dynamit Nobel

Plastics
for Apparatus
Construction



Dynamit Nobel has been engaged for many years in the use of plastics for the construction of chemical apparatus.

While our chemists continuously strive to improve the characteristics of the materials, our development and technical service technicians are developing new fabricating methods so as to widen the range of applications.

The comprehensive Dynamit Nobel range therefore includes a large number of materials that satisfactorily meet the requirements of the chemical apparatus industry.

Trovidur and Trovidur HT
Trolen H and Trolen P

are popular amongst chemical engineers because of their outstanding mechanical characteristics, excellent chemicals resistance and the superior thermal

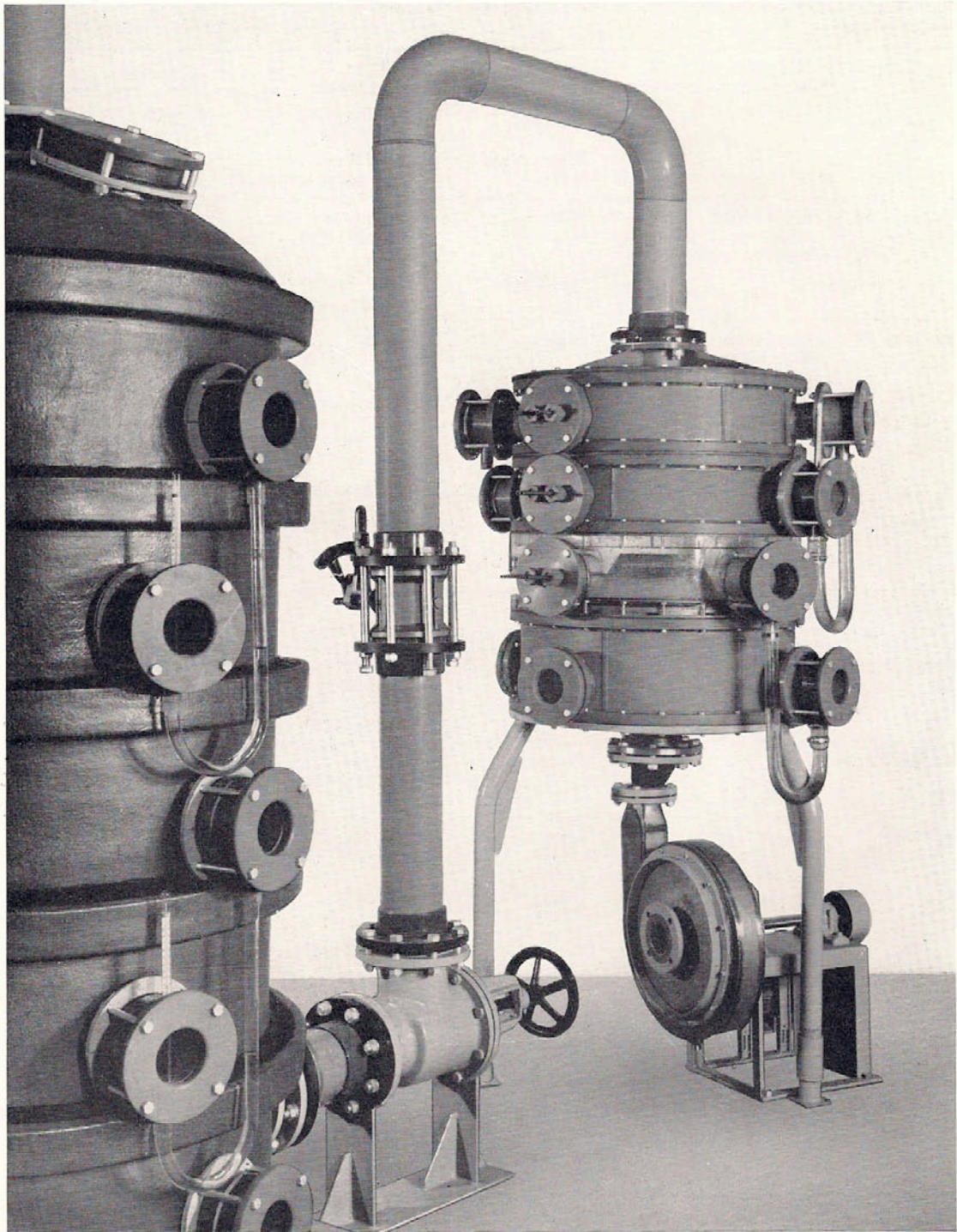
stability of these thermoplastic semi-finished materials.

The products are used primarily in the following applications:

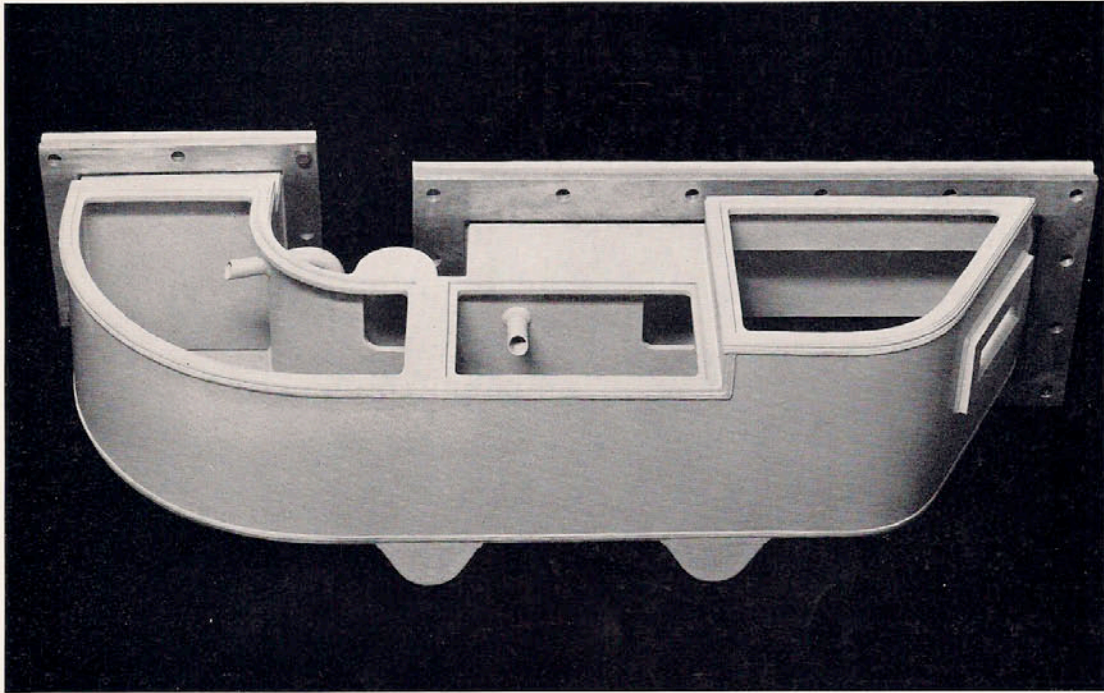
Chemical industry
Ventilation techniques
Film and photo industry
Electroplating industry
Textile and man-made fibre industry
Laboratories (including isotope laboratories and food production)
Air purification
Water treatment, freshwater and effluents
Food industry
Paper and pulp industry
General machine building
Mining and smelting
Electrical industry

Commercial name Material description	Chemical Basis	Grade supplied	Format	Colours
Trovidur®	PVC rigid	Sheets	0.5 – 40 mm 2000 x 1000 mm 1600 x 800 mm 1400 x 600 mm special dimensions	'characteristic colour red' grey RAL 7011 black in part transparent
		Pipes	in 65 dimensions	'characteristic colour red' in part grey RAL 7011 in part transparent special colours
		Blocks	30 – 100 mm 620 x 520 mm in part 520 x 310 mm	'characteristic colour red' grey RAL 7011 black special colours
		Solid bars	dia. 5 – 100 mm 0.5 – 4 mm long in accordance with dimensions	'characteristic colour red' in part grey RAL 7011 in part black
		Hollow rods	dia. from 5 x 18 mm to 28 x 60 mm approx. 2 m long	'characteristic colour red' in part grey RAL 7011
		Films	0.2, 0.3, 0.8, 0.5, 0.7, 0.8 and 1 mm 800 + 1000 mm wide 30 – 50 m long	'characteristic colour red'
		Profiles	various	as desired
		Welding rods	various dimensions 1 m long in part endless	'characteristic colour red' grey RAL 7011 grey DN 514 black transparent

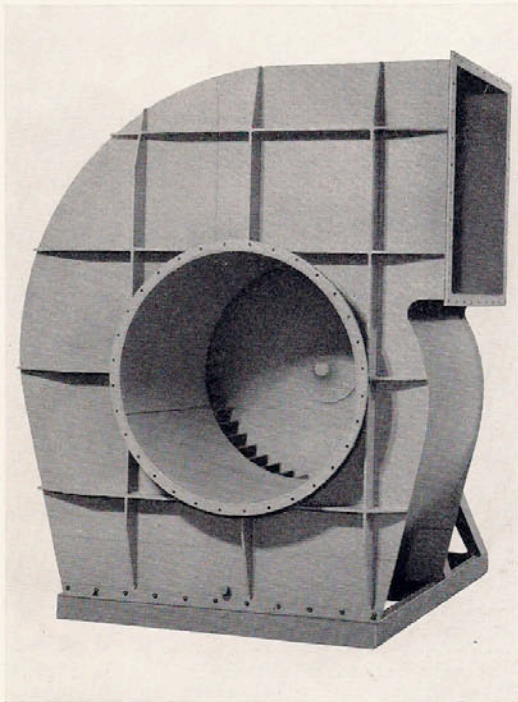
Commercial name Material description	Chemical Basis	Grade supplied	Format	Colours
Trovidur® HS 15	Rigid PVC high impact resistance	Sheets	1 – 40 mm 2000 x 1000 mm	grey DN 514
		Blocks	35 – 100 mm 620 x 520 mm	grey DN 514
		Welding rod	2, 3 and 4 mm 1 m long and endless	grey DN 514
Trovidur® HS 20	Rigid PVC high impact resistance weather resistant	Sheets	1 – 30 mm 2000 x 1000 mm	grey 231 grey DN 514
		Welding rod	2, 3 and 4 mm 1 m long	grey 231
Trovidur® HT	Rigid PVC high temperature resistance	Sheets	2 – 30 mm 2000 x 1000 mm	grey RAL 7034 black
		Blocks	500 x 500 mm 30, 40, 50, 60 mm 500 x 250 mm 80 mm	grey RAL 7034 black
		Pipes	in 14 dimensions from 16 – 315 mm external diameter	grey RAL 7034
		Welding rod	2, 3 and 4 mm 1 m long	grey RAL 7034 black
Trovidur® G	Rigid PVC glass fibre laminated	Sheets	2, 3, 4 mm 2000 x 1000 mm	'characteristic colour red'
Trovidur® EN	Rigid PVC extruded	Sheets	2 – 10 mm 2000 x 1000 mm 2 – 6 mm 3000 x 1000 mm	grey RAL 7011
Trovidur® EHS	Rigid PVC extruded high impact resistance	Sheets	2 – 10 mm 2000 x 1000 mm	grey 231
Trolen® H	Low-pressure polyethylene Type GM extruded and compression moulded	Sheets	1 – 30 mm approx. 2000 x 1000 mm	black in part natural
		Blocks	10 – 60 mm 600 x 500 mm	black
		Welding rod	2, 3 and 4 mm endless	black natural
Trolen® P	Polypropylene Type 2265 extruded and compression moulded	Sheets	2 – 25 mm approx. 2000 x 1000 mm	grey RAL 7032
		Pipes	in 26 dimensions from 16 – 160 mm external diameter	grey RAL 7032
		Round bars	20 – 90 mm approx. 2 m long	grey RAL 7032
		Welding rod	3 and 4 mm 1 m long and endless	grey RAL 7032
Mipoplast®	Soft PVC various degrees of softness	Tubes Strips Profiles	various	as desired



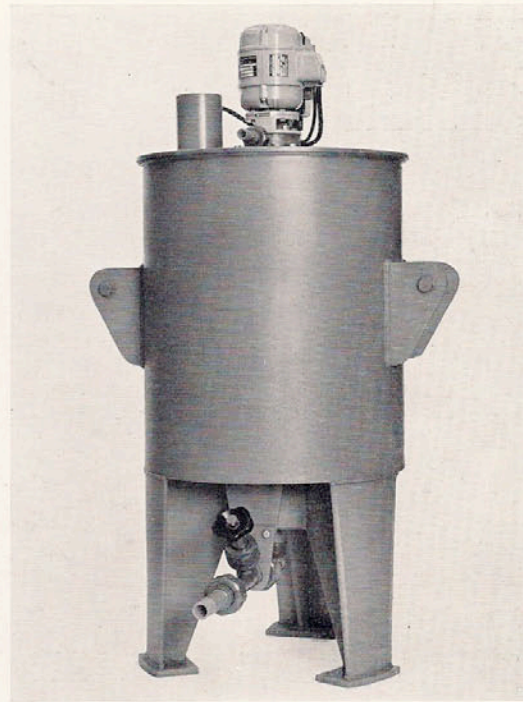
Chlorine driers from Trovidur



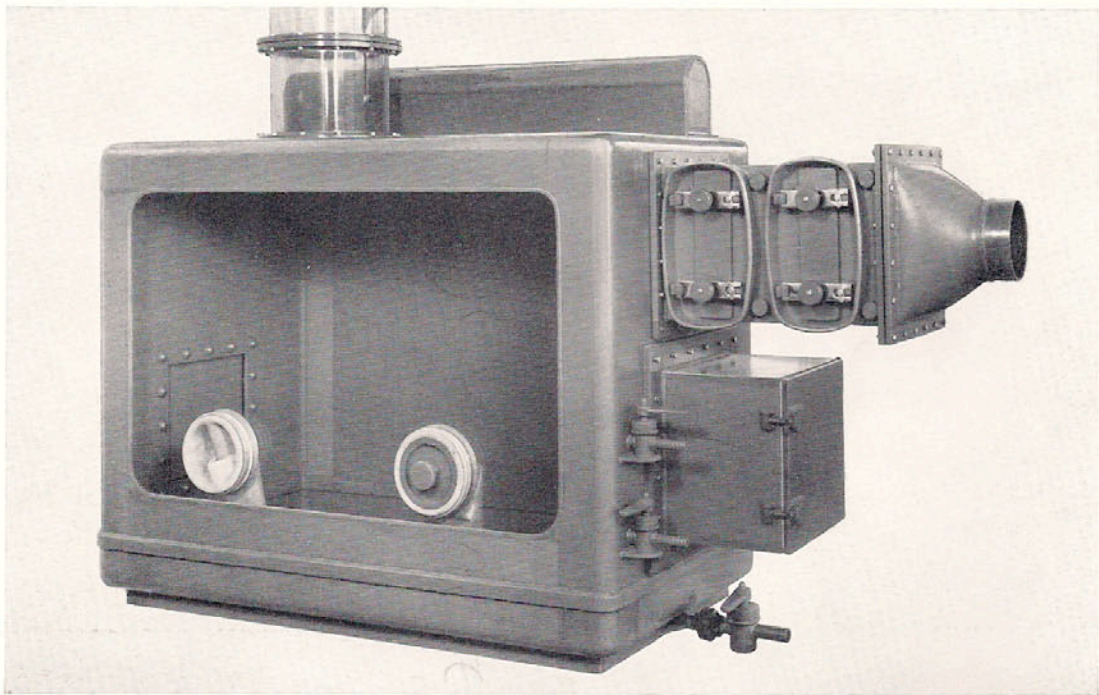
Terminal box of a chlorine/Alkali Electrolysis cell from Trovidur HT



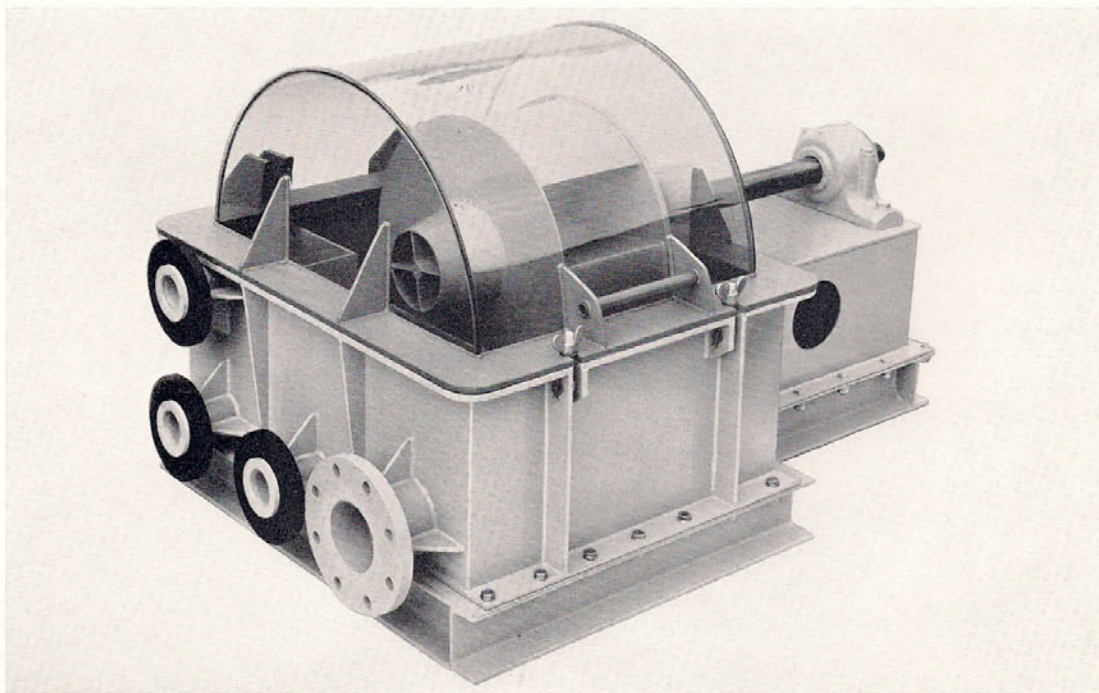
Ventilator from Trovidur



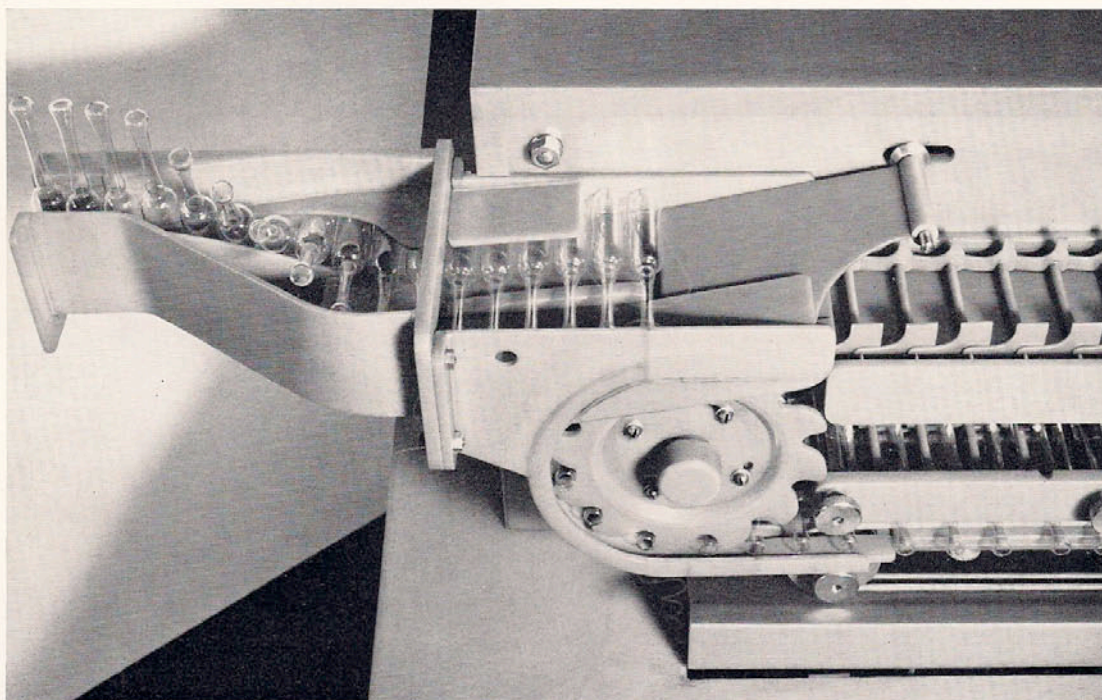
Mixer from Trovidur



Glove box from Trovidur



Metering implement from Trovidur



Ampoule filler from Trovidur

Trovidur

Trovidur is rightly regarded as the classic plastic for the construction of chemical apparatus. This material is free from plasticizer and unmodified. It is therefore distinguished by especially high chemical resistance.

Trovidur HS 15

Trovidur HS 15 is a material with high impact resistance, especially at low temperatures. It therefore provides the designer of chemical apparatus with a highly versatile material suitable for special applications.

Trovidur HS 20

Trovidur HS 20 is an impact-resistant thermoplastic with outstanding ageing resistance and particularly suitable for exterior use.

Trovidur HT

Trovidur HT will withstand temperatures up to 90 °C and is therefore of wide use in the construction of chemical apparatus. Trovidur HT greatly enlarges the applications of the well-tried Trovidur.

Trovidur G

Trovidur with unilateral glass-fibre lamination. The adhesion problem between Trovidur and glass fibre plastic has been solved with this product.

Trovidur EN

This extruded semi-finished material permits the production of sheets of great width and any desired length. Welding seams can therefore be omitted.

Trovidur EHS

Trovidur EHS is a product that combines high impact resistance with the formats likely to be used in extrusion techniques.

Trolen H

These are low-pressure polyethylene sheets which combine outstanding welding properties with high impact resistance, even at very low temperatures.

Trolen P

Thermostability and considerable indifference to solvents are the major characteristics of this polypropylene semi-finished material.

In addition to these excellent wear properties, all our thermoplastic semi-finished materials exhibit outstanding fabricating properties. They can be welded, bonded, thermoformed and are suitable for machining by the normal cutting operations.

Leaflets in the VA 32 series

Trovidur	32/120 D	Bonding of Trovidur	32/155 D
Trovidur	32/120 E	Bonding of Trovidur	32/155 E
Trovidur	32/120 F	Bonding of Trovidur	32/155 F
Trovidur Applications	32/121 D		
Stability Tables	32/130 D	Trovidur HS 15	32/157 D
Trovidur HT high-temperature resistant	32/136 D		
Trovidur HT Fabricating Instructions	32/138 D		
Working and laying of Trovidur pipes	32/151 D	Trolen H physical and chemical characteristics	32/210 D
Working and laying of Trovidur pipes	32/151 E	Trolen H physical and chemical characteristics	32/210 E
Working and laying of Trovidur pipes	32/151 F		
Welding of Trovidur	32/152 D	Trolen H processing specifications	32/211 D
Welding of Trovidur	32/152 E	Trolen H processing specifications	32/211 E
Welding of Trovidur	32/152 F	Trolen H processing specifications	32/211 F
The non-cutting shaping of Trovidur	32/153 D		
The non-cutting shaping of Trovidur	32/153 E	Trolen H physical and chemical properties	32/215 D
The non-cutting shaping of Trovidur	32/153 F		
The cutting shaping of Trovidur	32/154 D		
The cutting shaping of Trovidur	32/154 E	Mipoplast PVC 5319/1099	
The cutting shaping of Trovidur	32/154 F	for hydraulic pressure transformer	32/415 D

D = german E = english F = french

Dynamit Nobel Aktiengesellschaft
Verkauf Kunststoffe
521 Troisdorf/Cologne
Tel. 022 41/50 51 · Telex 883 371

® = Registered Trademark

32/135 GB 9. 15

Bearbeitet: Dr. Volker Hofmann, Troisdorf, 5. Mai 2011