

A typical example of modern and economic utilization of plastics for interior decoration, 1957



Administration Building of the Dynamit-Actien-Gesellschaft

A TYPICAL EXAMPLE OF MODERN AND ECONOMIC UTILIZATION OF PLASTICS FOR INTERIOR DECORATION

Materials used:

MIPOLAM Floor Covering	9600 sq. yards
ULTRAPAS Panels	4200 sq. yards
MIPOLAM Profiles	11000 linear yards
MIPOLAM Dekorative Foil	throughout the building

1/314 E
6/57

Die Hauptverwaltung in Troisdorf

DYNAMIT-ACTIEN-GESELLSCHAFT VORMALS ALFRED NOBEL & CO., ABTEILUNG VENDITOR KUNSTSTOFF-VERKAUF TROISDORF (KÖLN)



Elevator Doors:
Made of glass and
black TROLONIT with
silky-matt finish.
Interior:
ULTRAPAS walls,
MIPOLAM floor cov-
ering, surface-welded



Lobby: MIPOLAM floor covering, chessboard pattern. Elevator faced with ULTRAPAS panels, macoré wood pattern



Staircase: MIPOLAM floor covering, MIPOLAM stair nosing and handrails





Paternoster elevator; interior lining, floor, and edging made from MIPOLAM



Reception hall: MIPOLAM draperies



Landings: MIPOLAM floor covering, hand rail and skirting, MIPOLAM door panels

Stair case: MIPOLAM floor covering, hand rails, stair nosing and edging



Conference room: MIPOLAM floor covering and draperies





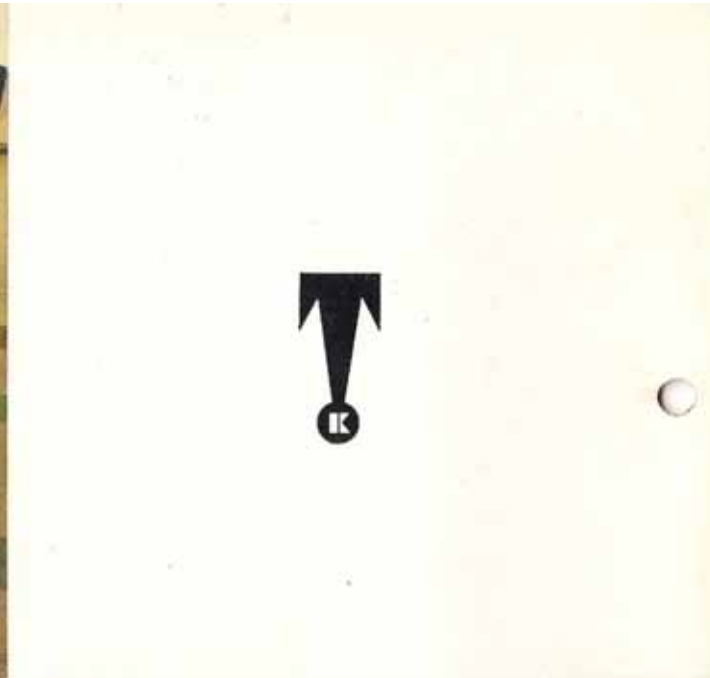
Filing cabinet with inloid ULTRAPAS



Modern cupboard with wash basin ULTRAPAS panelling inside and out, MIPOLAM floor covering

View from top of staircase:
MIPOLAM treads, edges,
and hand rails



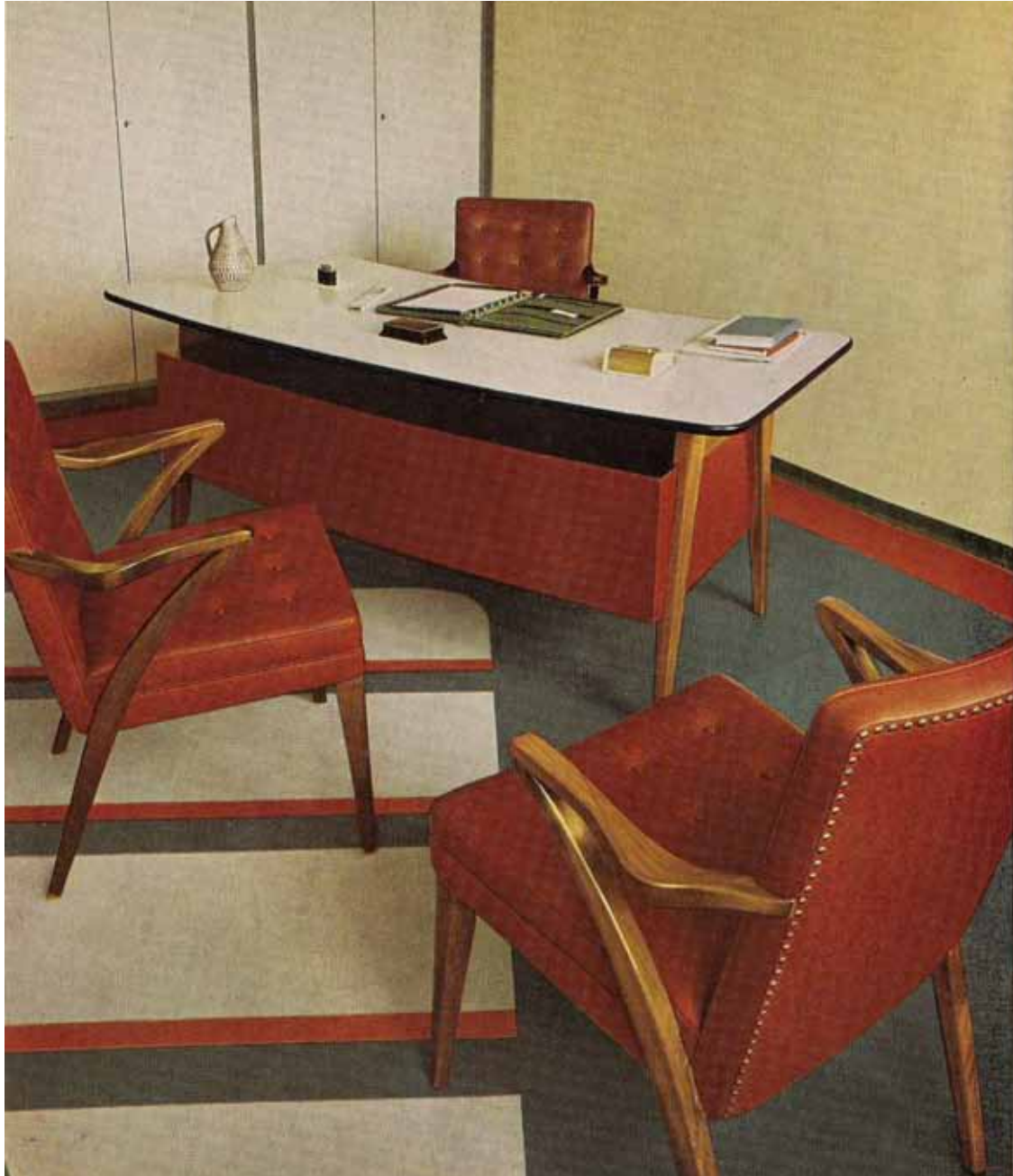


Hall: MIPOLAM floor covering



Conference room: ULTRAPAS wall panels — with built-in air-conditioner — and table top, MIPOLAM flooring and upholstery





Office: ULTRAPAS table top
and cupboards, MIPOLAM
flooring and upholstery



Executive's room: ULTRAPAS wood-grain
cupboards, MIPOLAM floor covering



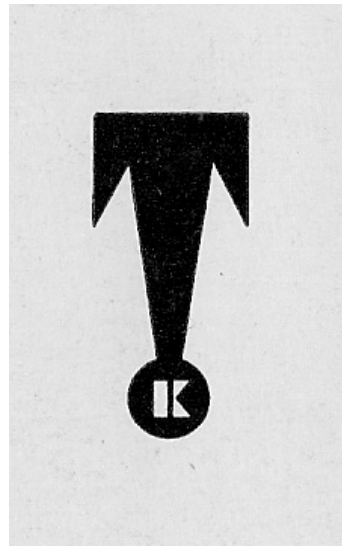
MIPOLAM floor covering





PLASTICS FOR INTERIOR DECORATION
MODERN • DISTINGUISHED • TIMELESS





LOGO VON „TROISDORFER KUNSTSTOFFE“

Bearbeitet: Dr. Volker Hofmann,
Troisdorf, 15. Dezember 2012